



G-Force
YACHTS

Go over the edge
and discover
the **X-factor** of
G-Force Yachts

The new X-Treme 25

- The concept
- The design
- The building process
- The performance
- The specifications
- Contact us



The concept

A new racer, a new approach of sailing. With a retractable keel and rudder this 25 racer will be holding its own against the best. With an estimated weight of just 850 kg this sportsboat will be easy to transport and can be launched and rigged easy without the use of a crane. And this all in a unique value for money approach!

The new X-Treme 25 is the ideal combination between a flatout racer and a easy to sail and very fast daysailer.



The design

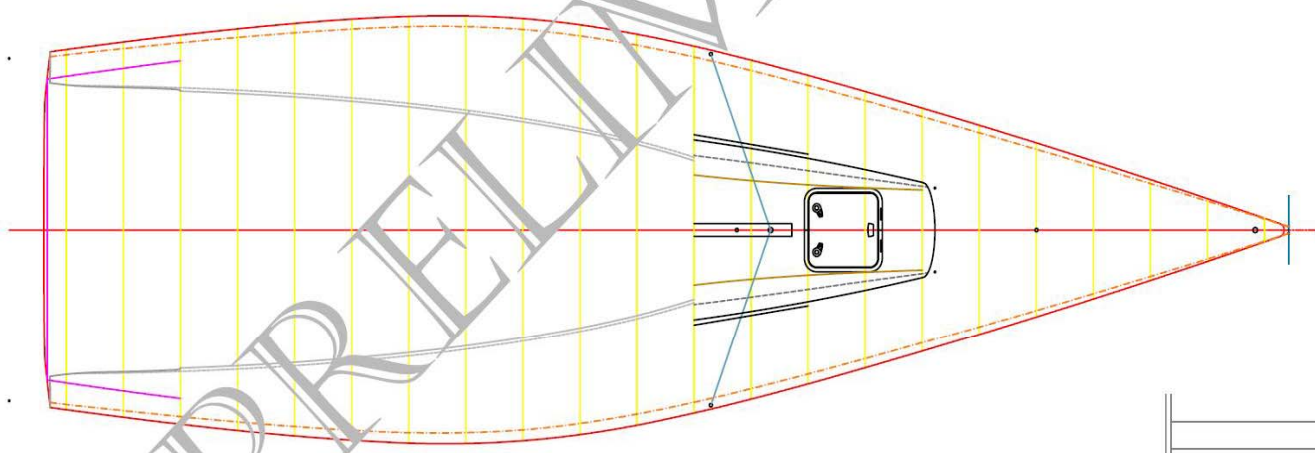
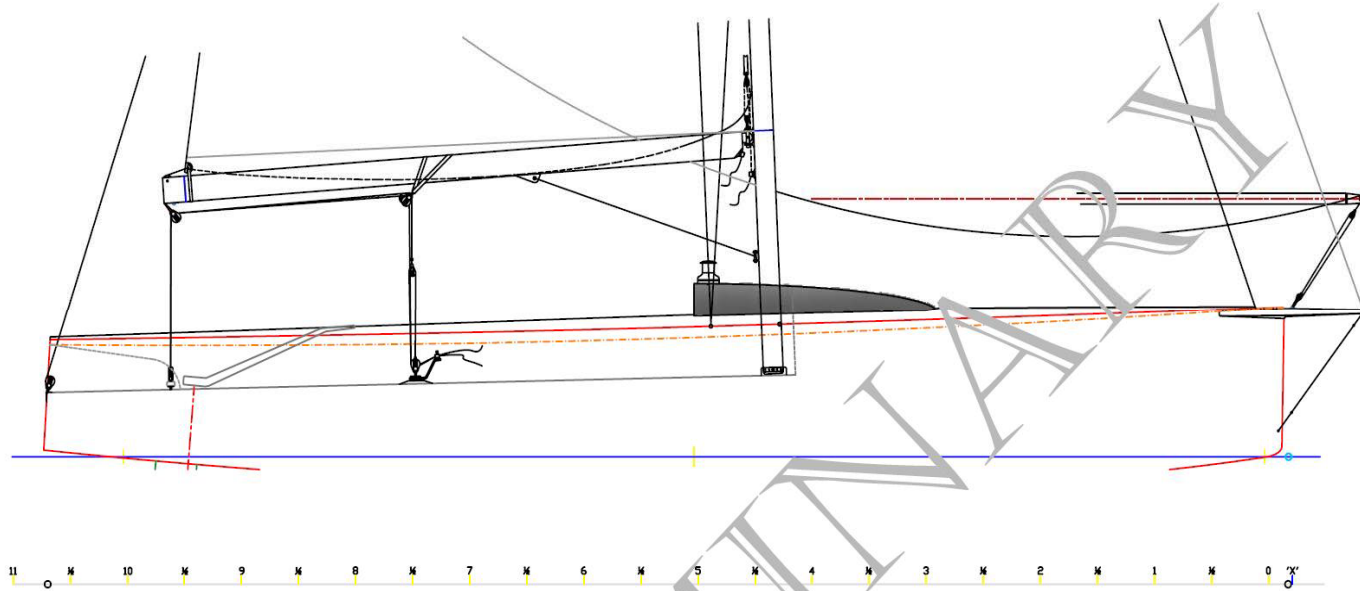
Designed by the renowned Lutra studio in close co-operation with G-Force Yachts the base of this sportsboat is simplicity and top performance. Simplicity in transporting / launching and in short-crewed sailing.


With symmetrical spinnaker, furling jib, a code 0 on a fixed bowsprit and spectacular specification this boat will be an easy and fun daysailer and a high performing racer in many regatta's.

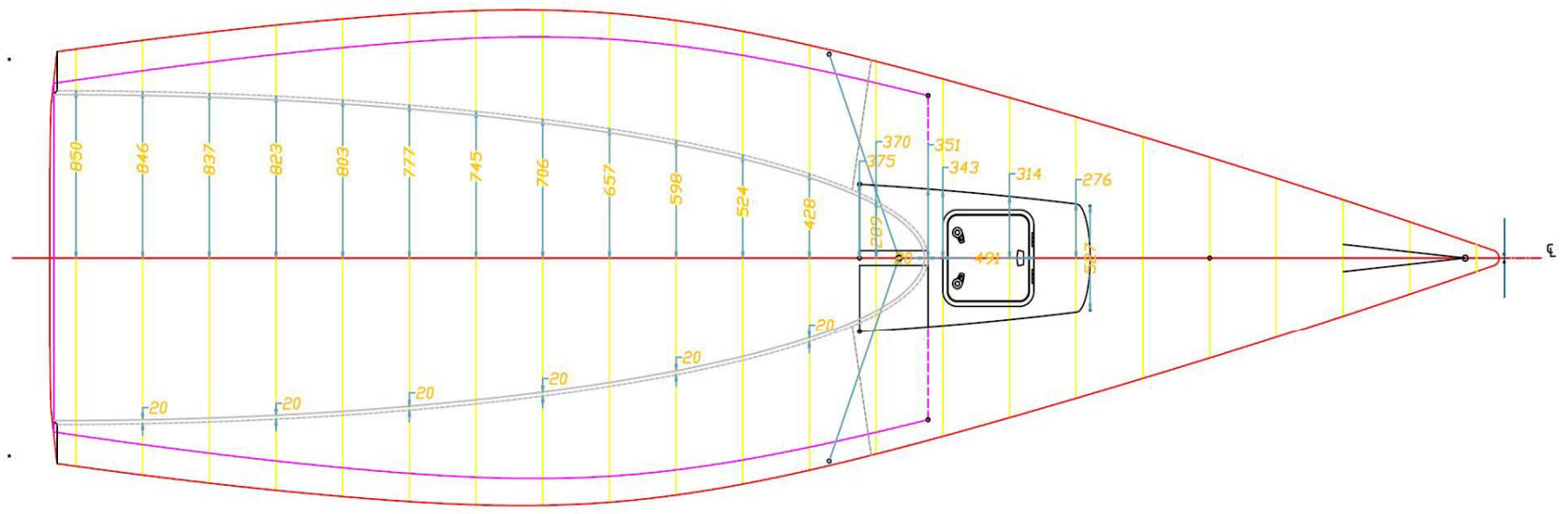
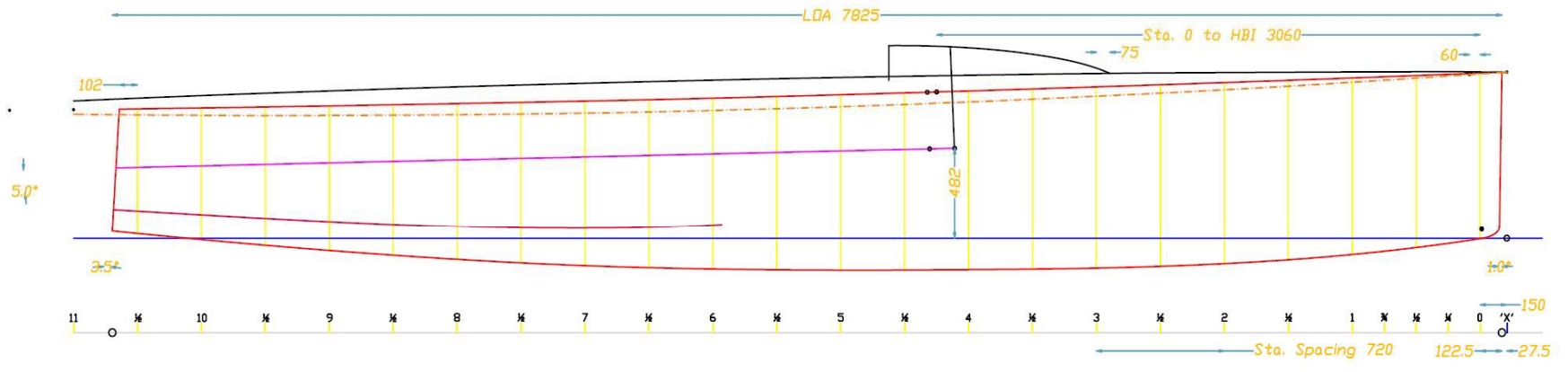
Due to a weight excl. sails of 850 kg this sportsboat will be able to transport without needing a 4x4 car.

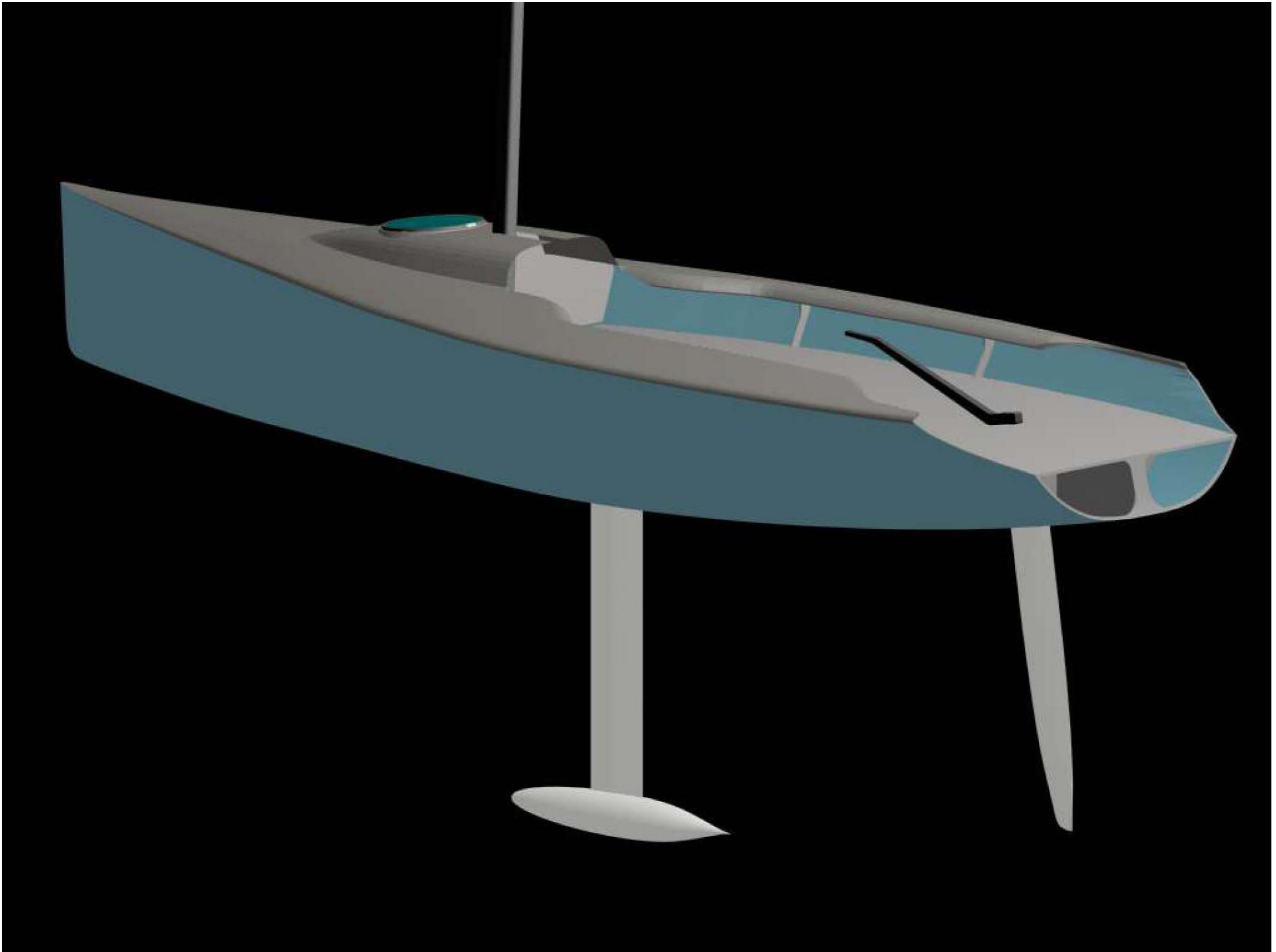


G-Force
YACHTS



Change:	Approved by:
LUTRA YACHT DESIGN	Drw.: # 1
	Date: 080107
<small>PO Box 212043, Dubai (U.A.E) TEL: +971 (0)4 384 8888 FAX: +971 (0)4 384 8884 E-MAIL: LUTRAD@CS.COM</small>	Drwr: ACK
	Scale: 1 : 15
	References: 25sb0620
GFX 25 Sportsboat prel. Deck Plan for G-Force Yachts	
Copyright of this drawing is the property of the designers and must not be used without their permission A1	

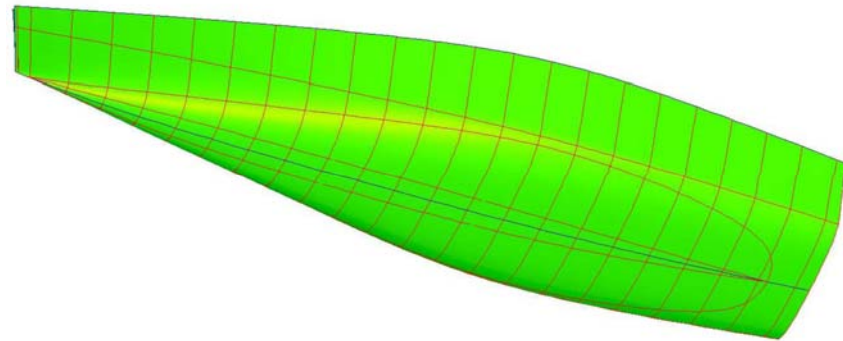
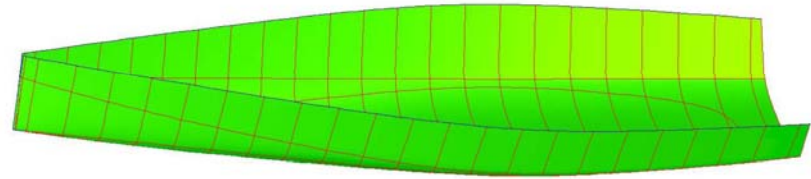




Building process

The state-of-the-art specifications have demanded that only the highest quality and most exotic materials available have been used throughout.

The X-Treme 25 is built entirely in a high quality vacuum bagged Epoxy Sandwich construction.



Performance

The X-Treme 25 will surf at speeds in excess of 20 knots. The light hull weight and the powerful sail plan will make this sportsboat extremely fast under all angles and circumstances.

Due to the well over thought sail plan, the X-Treme 25 has a symmetrical spinnaker, a Code 0 on a fixed bowsprit and a furling jib which will make easy and fast handling and optimal performance under all conditions or angles to the wind possible.

The deck layout is standardised and streamlined to a degree of such supreme simplicity that it will be an absolute pleasure to step aboard and cast off.

The total result is a very powerful, super-fast sportsboat, both downwind and upwind - ideal for both inshore or round buoy racing or day sailing.

Specifications

LOA : 7.825 m
DWL : 7.300 m
BEAM : 2.521 m
DRAFT : 2.000 m
DISPL (m) : 850 kg
Crew Weight : 340 kg

P : 10.000 m
E : 3.600 m
I : 9.650 m
IG : 3.000 m
J : 11.050 m
ISP : 3.700 m



Contact us



- **Tel: + 46 (0) 70 344 98 65**
- **+ 46 (0) 730 785 740**
- **Mail: info@oceanspirit.se**
- **web: www.oceanspirit.se**

TROSA – SWEDEN

